



PERFORMANCE DATA AND ASSESSMENT

12TH DECEMBER 2018



WHY DO WE HAVE DATA?

- Track attainment and progress of children
- Identify children who are at risk of not achieving
- Important to be data rich but not data burdensome
- To identify school needs and priorities
- To be used as one piece of evidence to support school improvement
- There is no Ofsted requirement on how data is presented.
- Should be held by teachers not leaders...

WHAT PERFORMANCE DATA DO WE HAVE?

- Internal – All year groups
- External data – EYFS, Y1 Phonics, KS1 and KS2 SATs
- Both look at attainment and progress of pupils
- Need to take in to account achievement of cohorts, groups, and individuals
- Who are the vulnerable groups in your school?
- Identify school trends to prioritise CPD/Development needs

1. Write < or >.

a. 0.5 $\frac{\text{or}}{\quad}$ 1.0

b. 3.2 $\frac{\text{or}}{\quad}$ 3.02

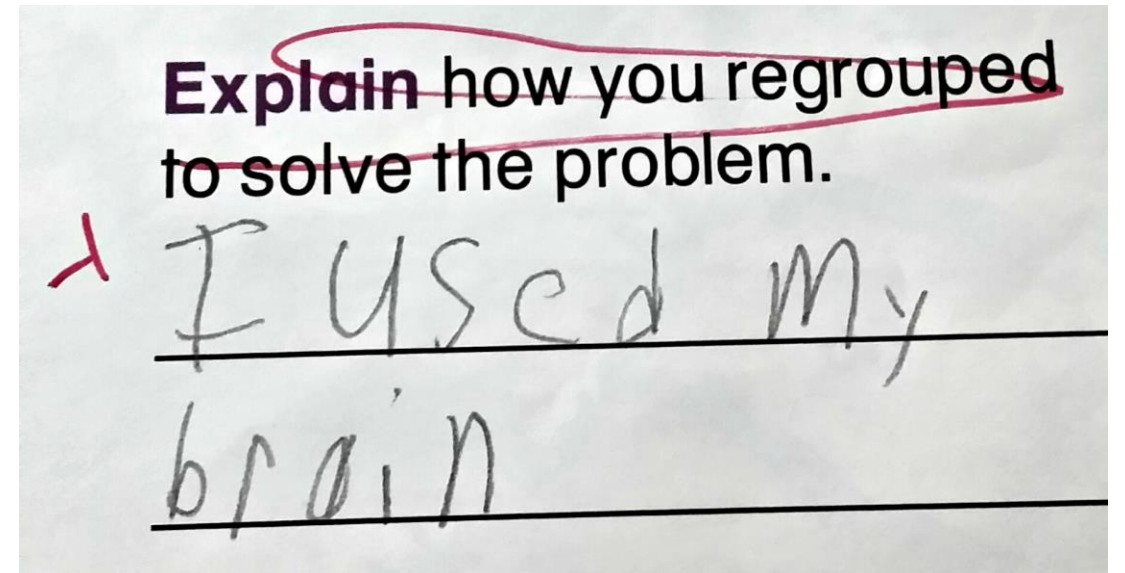
c. 4.83 $\frac{\text{or}}{\quad}$ 4.8

d. 6.25 $\frac{\text{or}}{\quad}$ 6.4

e. 0.7 $\frac{\text{or}}{\quad}$ 0.07

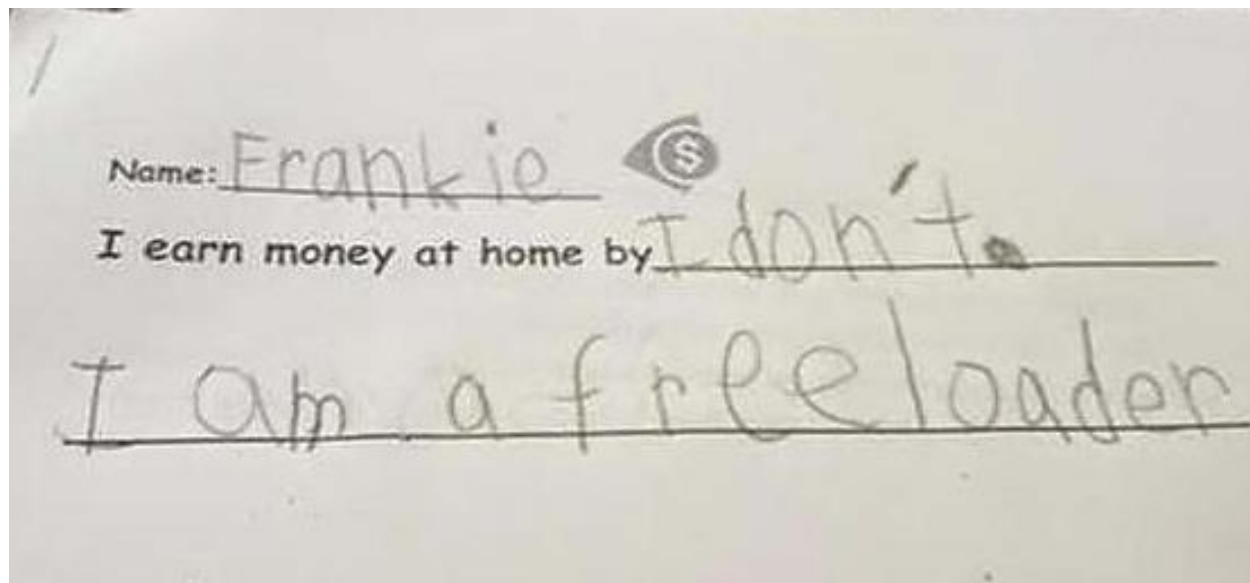
EXTERNAL DATA SOURCES

- IDSR – Inspection Dashboard Summary Report
- ASP – Assessing School Performance
- Huge focus on comparison between disadvantaged and non-disadvantaged
- How do you perform compared to national figures?
- Understanding the context



INTERNAL DATA SOURCES

- Termly Assessments
- Heads reports
- ALL year groups and vulnerable groups for R,W,M
- SEND and Pupil Premium data
- Pupil books



WHAT DO YOU NEED TO KNOW AS GOVERNORS?

- What are the strengths? First and Foremost!
- What are the areas for development? Subjects? Year Groups? Vulnerable Groups?
- Have these been addressed through the SIP and by leaders?
- How do you know if they are?

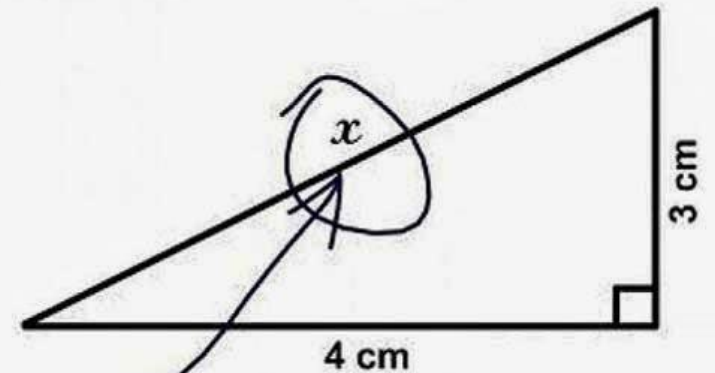
Where was the American Declaration of Independence signed?

At the bottom.

QUESTIONS TO BE ASKED AND TO ANSWER?

- What are the main priorities for the school?
- How do you know these are the priority?
- What are outcomes like for pupils? How do you know?
- What has been done to address the gaps?
- Is it having an impact?
- Is internal data accurate? How do we know?

3. Find x .



Here it is

WHAT DO YOU NOW NEED TO DO AS GOVERNORS?

- Ask the question
- Have priorities been addressed? Have gaps been narrowed over time?
- Are leaders/teachers aware of the gaps?
- Does the SIP/SEF reflect the data?

